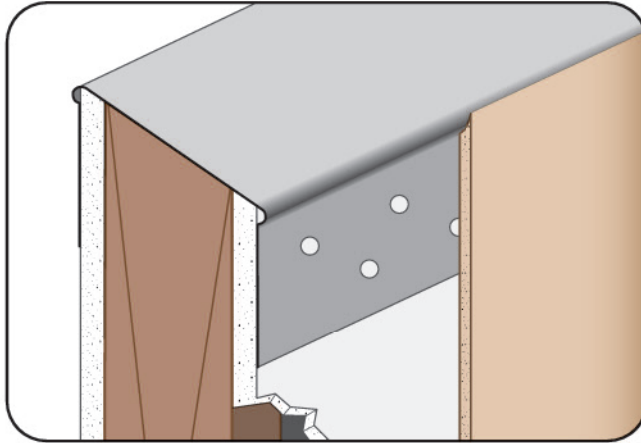




CUSTOM SIZES AVAILABLE!

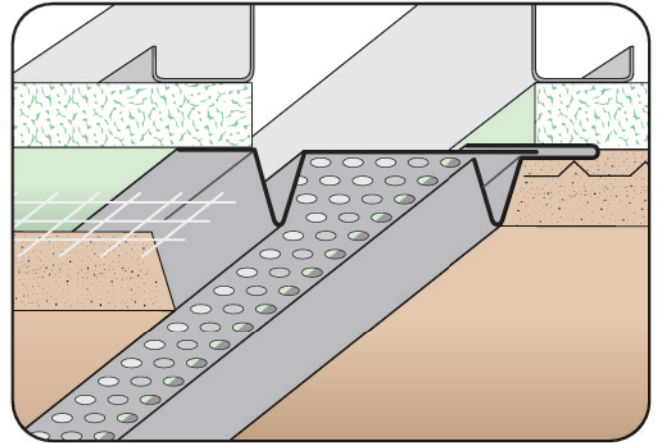
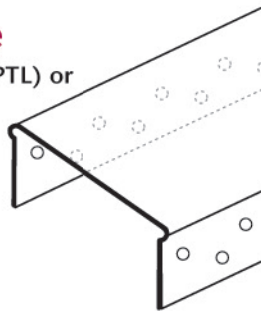
Stockton Custom Fabrication
877-786-2587
custom@StocktonProducts.com



ECX: End Cap With Tapeable Flange

- Available Anodized, PaintLoc (PTL) or Jet Kote (JTC) Finished
- Available in Aluminum

Used as an end cap to finish off partition walls. Standard length is 10 foot. The ECX End Cap has holes in the taping flange for keying the drywall mud.



EVS: Expansion Vent Screed (2 Piece)

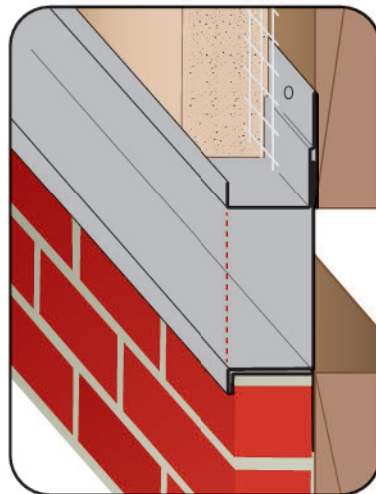
- Available With 1/8", 1/4" Vent Holes or No Holes
- Available in Aluminum, Copper, Galvanized Steel, Bonderized, Galvalume®, Stainless Steel or Zinc

Adjustable version of our standard vent screed that permits movement in a double stud condition while providing required airflow into space above. Can also be ordered non-vented for use as a horizontal expansion joint providing movement capabilities at a floor line.

EWC: #40 Expansion Joint (2 Piece)

- Superior™ Moisture Protection
- SolidGround® Design For Moisture Protection
- Available With 1/8" Weep Holes or No Holes

Available in Aluminum, Copper, Galvanized Steel, Bonderized, Galvalume®, Stainless Steel or Zinc
The unique hem design stops moisture penetration in a horizontal condition. The two-piece design allows for movement. Special "Step" on the attachment leg provides a locator for correct placement of the fasteners and helps keep the molding laying flat on the wall. Matching manufacturing plant miter-cut, solid-soldered inside and outside corners are available, giving you moisture management confidence throughout the entire installation.



EWR: Expansion Water- Resistant Reveal (2 Piece)

- Available With 1/8" Weep Holes or No Holes
- Available in Aluminum, Copper, Galvanized Steel, Bonderized, Galvalume®, Stainless Steel or Zinc

The dual function self-aligning expansion joint provides movement capability at floor line while allow moisture to release from the top ground and locks out moisture from the bottom. Special "Step" on the attachment leg provides a locator for correct placement of the fasteners and helps keep the molding laying flat on the wall.

